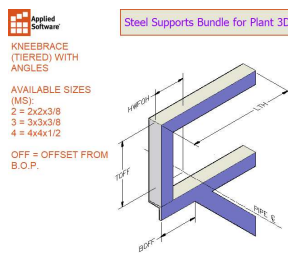
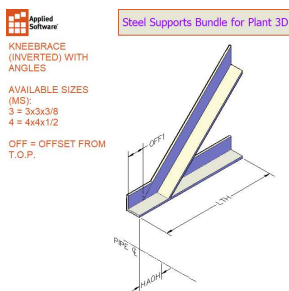
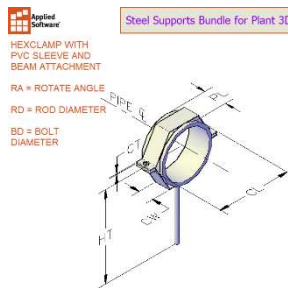
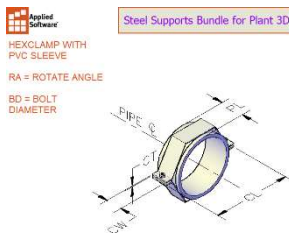
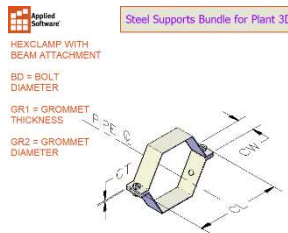
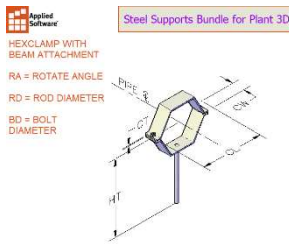


# Steel Supports for Plant 3D

Below is a list of the supports included with Plant 3D.



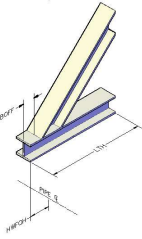


Steel Supports Bundle for Plant 3D

KNEEBRACE  
(INVERTED) WITH  
WIDE FLANGES

AVAILABLE SIZES  
(MS):  
4 = W4x13  
6 = W6x15  
8 = W8x18  
10 = W10x30

OFF = OFFSET FROM  
T.O.P.

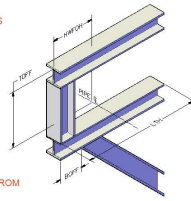


Steel Supports Bundle for Plant 3D

KNEEBRACE  
(TIERED) WITH WIDE  
FLANGES

AVAILABLE SIZES  
(MS):  
4 = W4x13  
6 = W6x15  
8 = W8x18  
10 = W10x30

OFF = OFFSET FROM  
B.O.P.



Steel Supports Bundle for Plant 3D

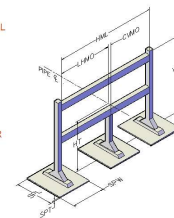
ROOF-MOUNTED  
SUPPORT

HMS = HORIZONTAL  
MEMBER SIZE

VMS = VERTICAL  
MEMBER SIZE

ML = MIDDLE LEG  
TOGGLE  
(OFF=0, ON=1)

TM = TOP MEMBER  
TOGGLE  
(OFF=0, ON=1)

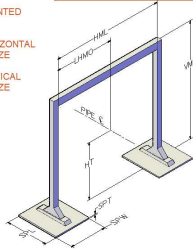


Steel Supports Bundle for Plant 3D

ROOF-MOUNTED  
SUPPORT

HMS = HORIZONTAL  
MEMBER SIZE

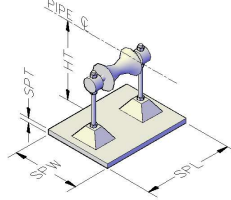
VMS = VERTICAL  
MEMBER SIZE



Steel Supports Bundle for Plant 3D

ROOF-MOUNTED  
SUPPORTS

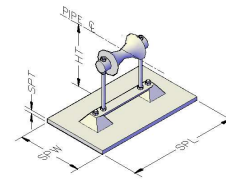
THIS SUPPORT IS  
FOR A 3" PIPE ONLY



Steel Supports Bundle for Plant 3D

ROOF-MOUNTED  
SUPPORTS

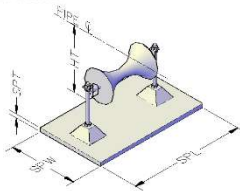
THIS SUPPORT IS  
FOR A 4" PIPE ONLY



Steel Supports Bundle for Plant 3D

ROOF-MOUNTED  
SUPPORTS

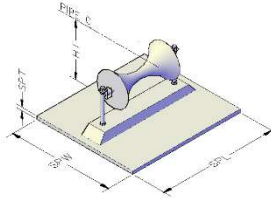
THIS SUPPORT IS  
FOR A 6" PIPE ONLY



Steel Supports Bundle for Plant 3D

ROOF-MOUNTED  
SUPPORTS

THIS SUPPORT IS  
FOR A 8" PIPE ONLY



Steel Supports Bundle for Plant 3D

STANCHION  
ADJUSTABLE PIPE

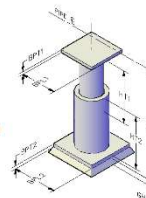
PS1 = TOP PIPE OD

PS1THK = TOP PIPE  
THICKNESS

PS2 = BOTTOM PIPE  
OD

PS2THK = BOTTOM  
PIPE THICKNESS

OFF = OFFSET FROM  
B.O.P.



Steel Supports Bundle for Plant 3D

STANCHION  
ADJUSTABLE PIPE  
WITH CHANNEL

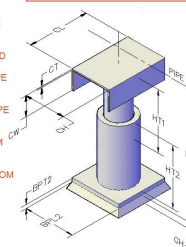
PS1 = TOP PIPE OD

PS1THK = TOP PIPE  
THICKNESS

PS2 = BOTTOM PIPE  
OD

PS2THK = BOTTOM  
PIPE THICKNESS

OFF = OFFSET FROM  
B.O.P.



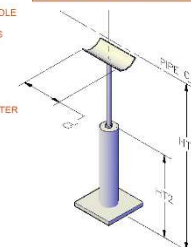
Steel Supports Bundle for Plant 3D

STANCHION CRADLE

AVAILABLE SIZES  
(PS):  
2 = 2"  
3 = 3"  
4 = 4"  
6 = 6"

RS = ROD DIAMETER

CT = CRADLE  
THICKNESS

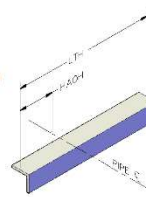


Steel Supports Bundle for Plant 3D

STEEL SUPPORT  
ANGLE

AVAILABLE SIZES  
(MS):  
3 = 3x3x3/8  
4 = 4x4x1/2

OFF = OFFSET FROM  
B.O.P.

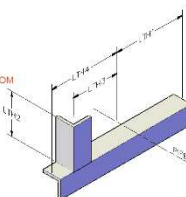


Steel Supports Bundle for Plant 3D

STEEL SUPPORT  
ANGLE WITH  
VERTICAL ANGLE

AVAILABLE SIZES  
(MS):  
2 = 2x2x3/8  
3 = 3x3x3/8  
4 = 4x4x1/2

OFF = OFFSET FROM  
B.O.P.

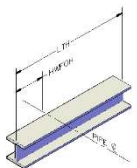


Steel Supports Bundle for Plant 3D

STEEL SUPPORT  
WIDE FLANGE

AVAILABLE SIZES  
(MS):  
4 = W4x13  
6 = W6x15  
8 = W8x18  
10 = W10x30

OFF = OFFSET FROM  
B.O.P.

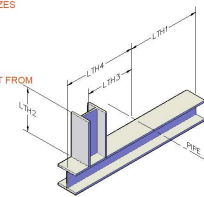


Steel Supports Bundle for Plant 3D

STEEL SUPPORT  
WIDE FLANGE WITH  
VERTICAL WIDE  
FLANGE

AVAILABLE SIZES  
(MS):  
4 = W4x13  
6 = W6x15  
8 = W8x18  
10 = W10x30

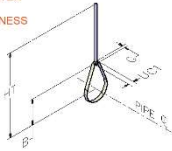
OFF = OFFSET FROM  
B.O.P.





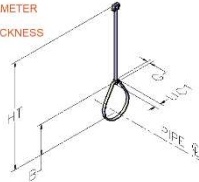
#### Steel Supports Bundle for Plant 3D

SWIVEL RING  
HANGER WITH ROD  
RD = ROD DIAMETER  
T1 = RING THICKNESS



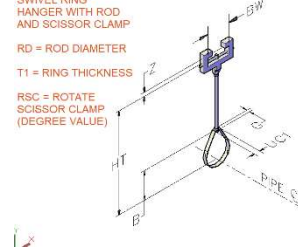
#### Steel Supports Bundle for Plant 3D

SWIVEL RING  
HANGER WITH ROD  
AND BEAM CLAMP  
RD = ROD DIAMETER  
T1 = RING THICKNESS



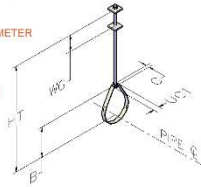
#### Steel Supports Bundle for Plant 3D

SWIVEL RING  
HANGER WITH ROD  
AND SCISSOR CLAMP  
RD = ROD DIAMETER  
T1 = RING THICKNESS  
RSC = ROTATE  
SCISSOR CLAMP  
(DEGREE VALUE)



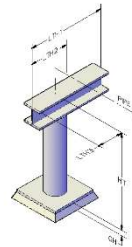
#### Steel Supports Bundle for Plant 3D

SWIVEL RING  
HANGER WITH ROD  
AND SQUARE  
WASHERS  
RD = ROD DIAMETER  
T1 = RING  
THICKNESS  
WS = WASHER  
SIZE



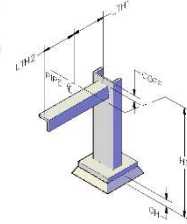
#### Steel Supports Bundle for Plant 3D

TEEPOLE WITH POST  
AVAILABLE SIZES  
(MS):  
4 = W4x13  
6 = W6x15  
8 = W8x18  
10 = W10x30  
(PS):  
1 = 4.5 OD  
6 = 6.625 OD  
OFF = OFFSET FROM  
B.O.P.



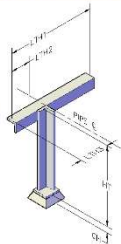
#### Steel Supports Bundle for Plant 3D

TEEPOLE WITH  
CHANNEL AND  
ANGLE  
AVAILABLE SIZES  
(CMS):  
4 = 4x5.4  
5 = 5x9  
(AMS):  
2 = 2x2x3/8  
3 = 3x3x3/8  
4 = 4x4x1/2



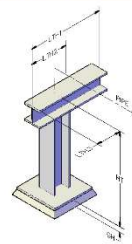
#### Steel Supports Bundle for Plant 3D

TEEPOLE WITH  
ANGLE  
AVAILABLE SIZES  
(MS1):  
2 = 2x2x3/8  
3 = 3x3x3/8  
4 = 4x4x1/2  
OFF = OFFSET FROM  
B.O.P.



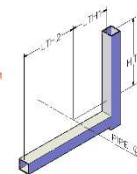
#### Steel Supports Bundle for Plant 3D

TEEPOLE WITH WIDE  
FLANGE  
AVAILABLE SIZES  
(MS):  
4 = W4x13  
6 = W6x15  
8 = W8x18  
10 = W10x30  
(VMS):  
4 = W4x13  
6 = W6x15  
8 = W8x18  
10 = W10x30  
OFF = OFFSET FROM  
B.O.P.



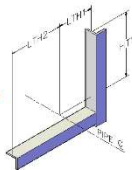
#### Steel Supports Bundle for Plant 3D

TRAPEZE ON BEAM  
AND COLUMN WITH  
HILT  
AVAILABLE SIZES  
(MS):  
90 = M1 90mm  
120 = M1 120mm  
OFF = OFFSET FROM  
B.O.P.



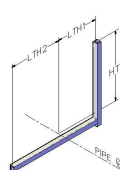
#### Steel Supports Bundle for Plant 3D

TRAPEZE ON BEAM  
AND COLUMN WITH  
ANGLES  
AVAILABLE SIZES  
(MS):  
2 = 2x2x3/8  
3 = 3x3x3/8  
4 = 4x4x1/2  
OFF = OFFSET FROM  
B.O.P.



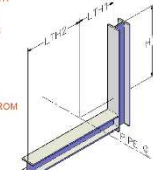
#### Steel Supports Bundle for Plant 3D

TRAPEZE ON BEAM  
AND COLUMN WITH  
UNISTRUT  
AVAILABLE SIZES  
(MS):  
1000 = P1000  
1100 = P1100  
2000 = P2000  
3000 = P3000  
3300 = P3300  
4000 = P4000  
4100 = P4100  
5000 = P5000  
5500 = P5500  
OFF = OFFSET FROM  
B.O.P.



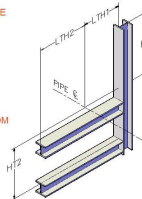
#### Steel Supports Bundle for Plant 3D

TRAPEZE ON BEAM  
AND COLUMN WITH  
WIDE FLANGES  
AVAILABLE SIZES  
(MS):  
4 = W4x13  
6 = W6x15  
8 = W8x18  
10 = W10x30  
OFF = OFFSET FROM  
B.O.P.



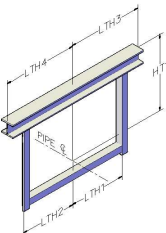
#### Steel Supports Bundle for Plant 3D

TRAPEZE (TIRED)  
ON BEAM AND  
COLUMN WITH WIDE  
FLANGES  
AVAILABLE SIZES  
(MS):  
4 = W4x13  
6 = W6x15  
8 = W8x18  
10 = W10x30  
OFF = OFFSET FROM  
B.O.P.



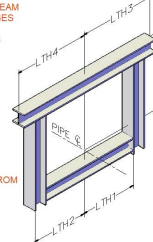
#### Steel Supports Bundle for Plant 3D

TRAPEZE WITH BEAM  
AND ANGLES  
AVAILABLE SIZES  
(MS1):  
2 = 2x2x3/8  
3 = 3x3x3/8  
4 = 4x4x1/2  
(MS2):  
4 = W4x13  
6 = W6x15  
8 = W8x18  
10 = W10x30  
OFF = OFFSET FROM  
B.O.P.



#### Steel Supports Bundle for Plant 3D

TRAPEZE WITH BEAM  
AND WIDE FLANGES  
AVAILABLE SIZES  
(MS1):  
4 = W4x13  
6 = W6x15  
8 = W8x18  
10 = W10x30  
(MS2):  
4 = W4x13  
6 = W6x15  
8 = W8x18  
10 = W10x30  
OFF = OFFSET FROM  
B.O.P.



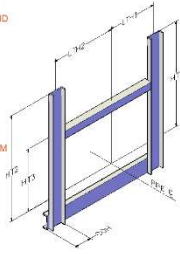


**Steel Supports Bundle for Plant 3D**

TRAPEZE (TIERED)  
WITH CHANNELS AND  
ANGLE

AVAILABLE SIZES  
(CMS):  
6 = C6x8.2

(AMS):  
33 = 3x3x1/4  
44 = 4x4x5/16  
46 = 4x4x3/8  
OFF = OFFSET FROM  
B.O.P.

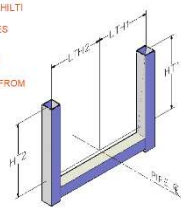


**Steel Supports Bundle for Plant 3D**

TRAPEZE WITH HILT

AVAILABLE SIZES  
(MS):  
90 = M 90mm  
120 = M 120mm

OFF = OFFSET FROM  
B.O.P.

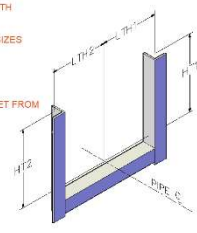


**Steel Supports Bundle for Plant 3D**

TRAPEZE WITH  
ANGLES

AVAILABLE SIZES  
(MS):  
2 = 2x2x3/8  
3 = 3x3x3/8  
4 = 4x4x1/2

OFF = OFFSET FROM  
B.O.P.

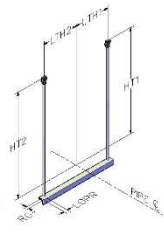


**Steel Supports Bundle for Plant 3D**

TRAPEZE WITH  
ANGLE AND RODS

AVAILABLE SIZES  
(MS):  
1 = 1-1/2x1-1/2x1/4  
2 = 2x2x1/4  
3 = 2x2x3/8  
4 = 2-1/2x2-1/2x3/8  
5 = 3x3x3/8  
6 = 3x3x1/2  
7 = 4x4x1/2

ROD = NUT OUTSIDE  
DIAMETER  
ROUND = ROD & NUT  
DIAMETER  
OFF = OFFSET FROM  
B.O.P.

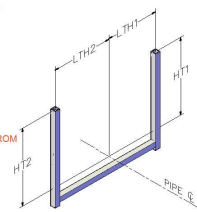


**Steel Supports Bundle for Plant 3D**

TRAPEZE WITH  
UNISTRUT

AVAILABLE SIZES  
(MS):  
1000 = P1000  
1100 = P1100  
2000 = P2000  
3000 = P3000  
3300 = P3300  
4000 = P4000  
4100 = P4100  
5000 = P5000  
5500 = P5500

OFF = OFFSET FROM  
B.O.P.

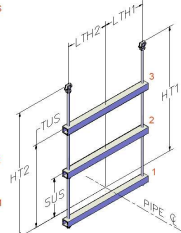


**Steel Supports Bundle for Plant 3D**

TRAPEZE WITH  
UNISTRUT AND RODS

AVAILABLE SIZES  
(MS):  
1000 = P1000  
1100 = P1100  
2000 = P2000  
3000 = P3000  
3300 = P3300  
4000 = P4000  
4100 = P4100  
5000 = P5000  
5500 = P5500

RD = ROD DIAMETER  
QTY = 1, 2 or 3  
OFF = OFFSET FROM  
B.O.P.



**Steel Supports Bundle for Plant 3D**

TRAPEZE WITH WIDE  
FLANGES

AVAILABLE SIZES  
(MS):  
4 = W4x13  
6 = W6x15  
8 = W8x18  
10 = W10x30

OFF = OFFSET FROM  
B.O.P.

